

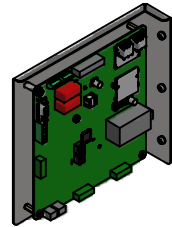
HGP Part Number	HorsePower (HP)	kVar	Harmonic	Voltage (V)	HZ.	Phase
HGP0030BW3----	30	30	5th	240	60	3

Note: For Torque Information See IOM Manual

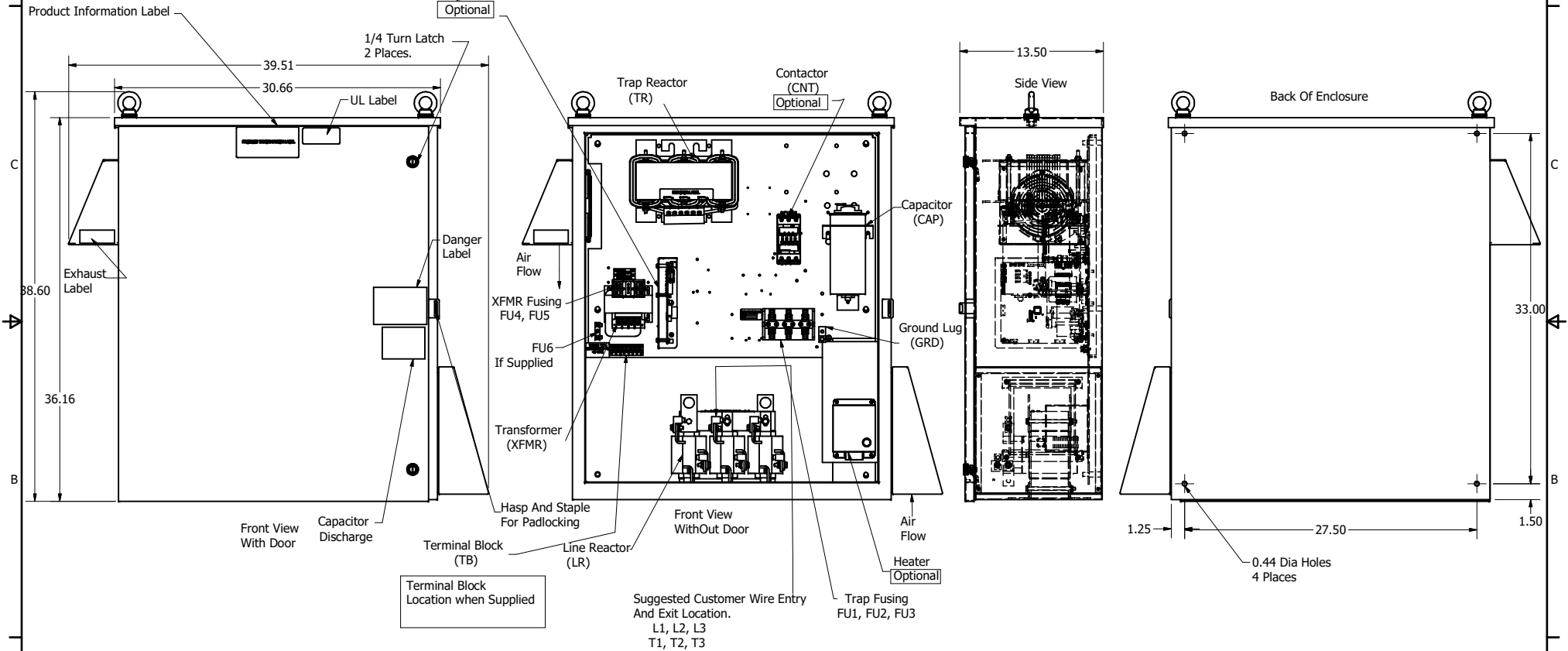
HGP Part Number	Schematic Drawing #	Approx Weight (LBS)
HGP0030BW3S0000	30209-1S	269
HGP0030BW3C0000	30209-1	271
HGP0030BW3C000H	30209-1H	275
HGP0030BW3C1000	30209-PQ	274
HGP0030BW3C100H	30209-PQH	278

Customer Connections.
L1, L2, L3, T1, T2, T3
Wire Range: 2/0 AWG to 14AWG.

Ground Lug
Wire Range: 2/0 to 14 AWG.



PQConnect Board
Optional



HGP0030BW3----					
Components	S0000	C0000	C000H	C1000	C100H
Line Reactor (LR)	x	x	x	x	x
Trap Reactor (TR)	x	x	x	x	x
Capacitor (Cap)	x	x	x	x	x
Trap Fusing, FU1, FU2, FU3	x	x	x	x	x
Contactor (CNT)		x	x	x	x
Transformer (XFMR)	x	x	x	x	x
XFMR Fusing, FU4, FU5	x	x	x	x	x
XFMR FU6					x
Heater			x		x
PQConnect Board				x	x

NOTE: USE ONLY HUBS OR FITTINGS THAT COMPLY WITH UL514B FOR TYPE 3R ENCLOSURES

Customer Is Responsible For Installation to Meet All National And Local Electrical Codes.

Material(s) Shall be RoHS Compliant

THE INFORMATION AND DESIGNS CONTAINED IN THIS DRAWING ARE CONFIDENTIAL AND THE PROPRIETARY PROPERTY OF ALLIED MOTION TECHNOLOGIES INC. AND ITS SUBSIDIARIES. NEITHER THIS DESIGN NOR ANY INFORMATION CONTAINED IN THIS DRAWING MAY BE REPRODUCED OR DISCLOSED TO OTHERS WITHOUT THE EXPRESS WRITTEN CONSENT OF ALLIED MOTION TECHNOLOGIES INC. AND ITS SUBSIDIARIES.					TOLERANCES (EXCEPT AS NOTED) DECIMAL .XX ± .25 .XXX ± .10
	B	S265, Enclosure Updated	8/6/2020	DSW	FRACTIONAL ± 1/32
	A	AS BUILT	10/12/15	BWM	ANGULAR ± 1°
	NO	REVISION	DATE	BY	
					W1132N10611 (Rev 1) 11/15/20 Germantown, WI 53022 © 2023 TCI, LLC An Allied Motion Company Harmonic Guard Passive HGP, 30HP, 240/3/60, Type 3R 106158DG
					DWN BY: BWM DATE: 10/12/15 SCALE: 1/8 DRAWN BY: BWM SHEET 1 OF 1